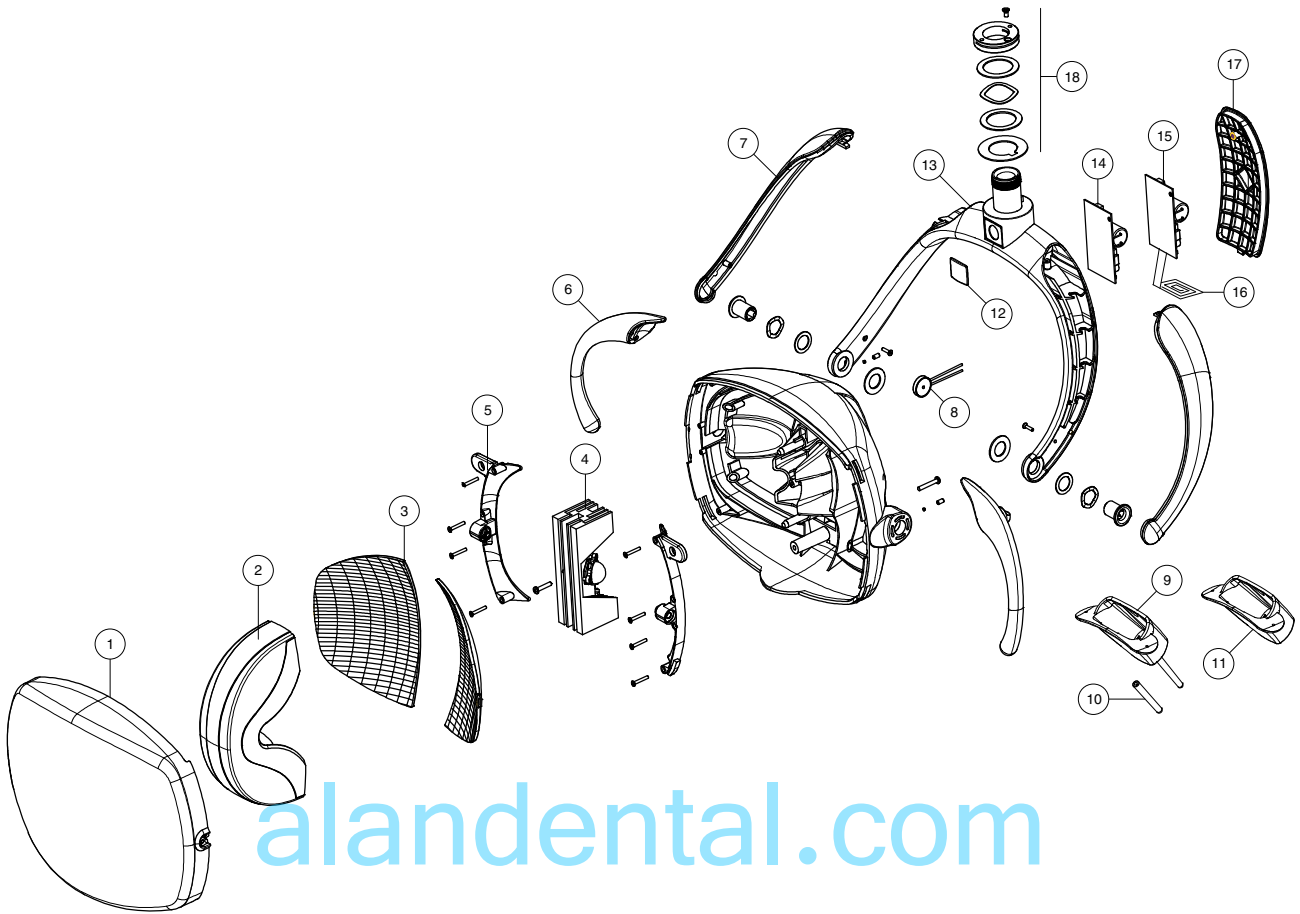


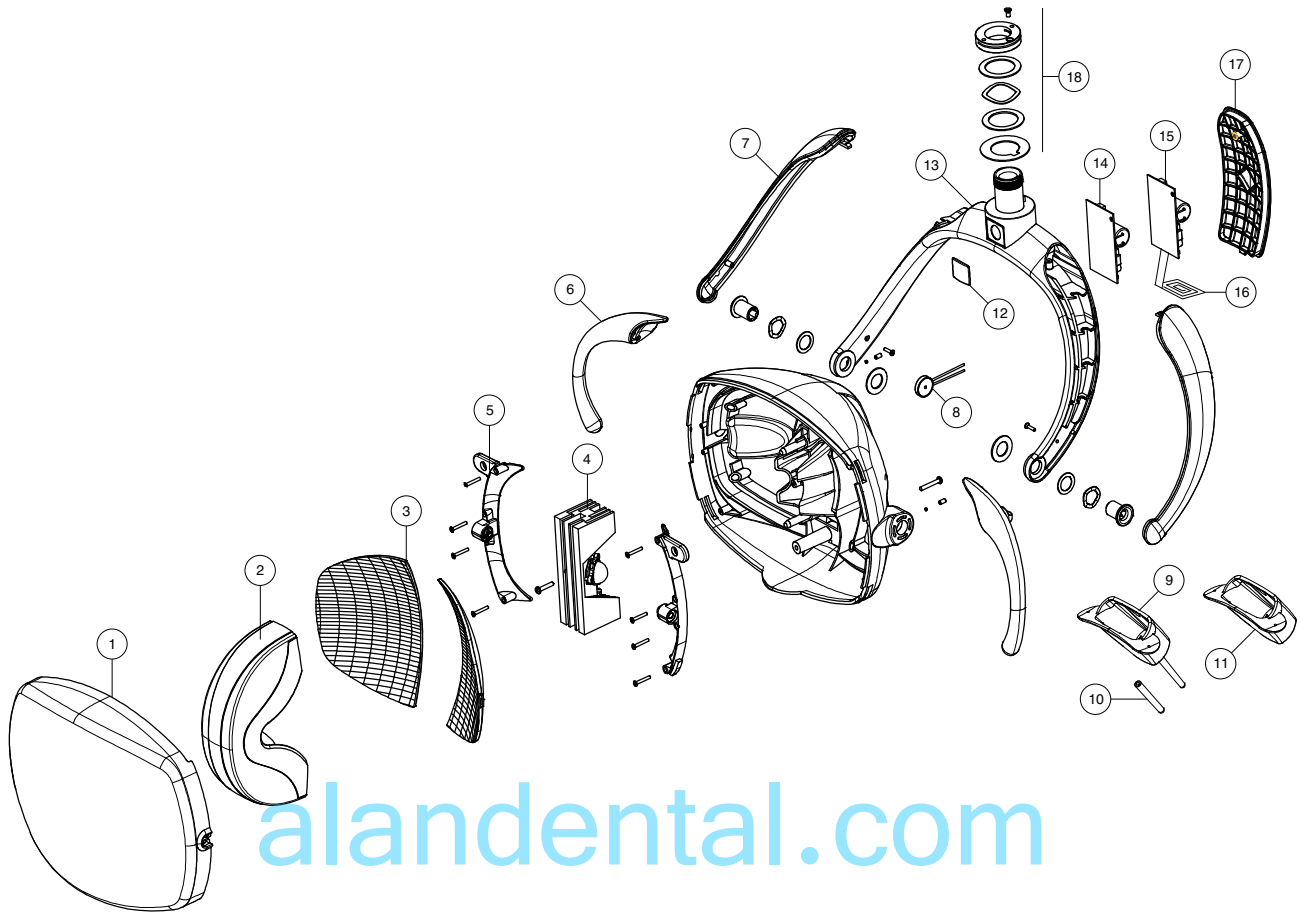
Item	Part Number	Description
1	56021	Cover Flex Arm
2	56022	Knuckle, Rigid Arm
3	56023	Knuckle, Head
4	56024	Spring Rod
5	56025	Extension Support
6	56026	Bushing
7	56027	Bezel
8	56028	Bushing
9	56029	Block Spring Tensioner
10	56030	Friction Block
11	56031	Tensioner Rod
12	56032	End Cap Cover
13	56033	Retainer Ring
14	56034	Long Pin
15	56035	Retainer Ring Small
16	56036	Short Pin
17	56037	Retainer Ring Small
18	56038	Spring
19	56039	Screw Cap Head Socket
20	56040	Screw, End Cap
21	56041	Friction Screw



alandental.com

Pos	Item #	Description	pcs
1	RLL-H-01	Front protection screen	1
2	RLL-H-02	Optical cover	1
3	RLL-H-03	Reflectors set ( couple )	1
4	RLL-H-04	Complete optical group	1
5	RLL-H-05	Handle holders set ( right and left )	1 serie
6	RLL-H-06	Handles set ( right and left )	1 serie
7	RLL-H-07	Junction yoke cover set ( right and left )	1 serie
8	RLL-H-08	Buzzer	1
9	RLL-H-09	Complete switch assembly	1
10	RLL-H-10	Switch lever set	1
11	RLL-H-11	Switch holders ( lamp with sensor )	1
12	RLL-H-12	Lable with TPC logo	1
13	RLL-H-13	Complete junction joke	1

continue on page 2



alandental.com

Pos	Code	Description	pcs
14	RLL-H-14	Pcb std function	1
15	RLL-H-15	Main Proximity Sensor Board	1
16	RLL-H-16	Proximity sensor	1
17	RLL-H-17	Pcb cover ( lamp without sensor )	1
17s	RLL-H-17s	Pcb cover ( lamp with sensor )	1
18	RLL-H-18	Ring nuts set ( head )	1 set
	RLL-H-19	Complete junction joke ( third axis version )	